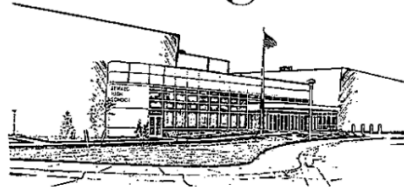


Seward High School

Scott Axt
Principal
Rich Eber
Assistant Principal
Scott Curry
Activities Director



532 Northern Heights • Seward, Nebraska 68434
Phone 402-643-2988 • Fax 402-643-2599
www.sewardpublicschools.org

Noelle Baker
Counselor
Kevin Fields
Counselor
Carmen Johnson
Registrar

EVENT: Cross Country Meet Charlie Thorell XC Invite September 5th

COST: \$170 (\$85 for just Girls or boys)

WATER: Water coolers will be available, please have athletes bring their own water bottle.

LOCATION: Plum Creek Sports Complex on Karol Kay Blvd (East of Seward Middle School).

ROAD CLOSURE: Karol Kay Blvd will be blocked at Waverly Road at 9:30am until both races have finished.

SPECTATORS: Please let your spectators know that they will access the parking lot from the South via Pinewood Ave. to Karol Kay Blvd.

BUS DRIVERS: Please use Hwy 15 to Waverly Road. Travel East on Waverly until you reach Karol Kay Blvd then turn South. Buses will park on the East side of Karol Kay Blvd adjacent to the Middle school practice field.

TEAM CAMPS: Team camp may be established between Field 1 and Field 4 at the softball complex.

RESTROOMS: Restrooms are available at the 4-plex and a portable-potty is near the finish line.

TIMING/RESULTS: Timing will be done by Black Squirrel. Results will be on BSTC.LIVE and uploaded to Athletic.net after the completion of the races.

SCHEDULE:

10:00	Varsity Girls
-------	---------------

10:30	Varsity Boys
11:00	JV Girls
11:45	JV Boys
12:30	Middle School

GUIDELINES: All fans should stay behind the flags at the start and finish areas.

AWARDS: Awards will follow the boys race on the West side of the Cattle Indoor Hitting Facility.

Any questions please contact:
 Scott Curry
scott.curry@sewardschools.org
 School 402 643-2988
 Cell 402-689-9732

Head CC Coach Kurt Holliday
kurt.holliday@sewardschools.org

Instructions to add to Meet Info for XC
 Entries will be entered through Bound. If you have already have an account, log in at <https://www.gobound.com/ne/> , then go to your programs (T-Shirt on the left), Click on your program, then go to meet entries to enter your athletes.

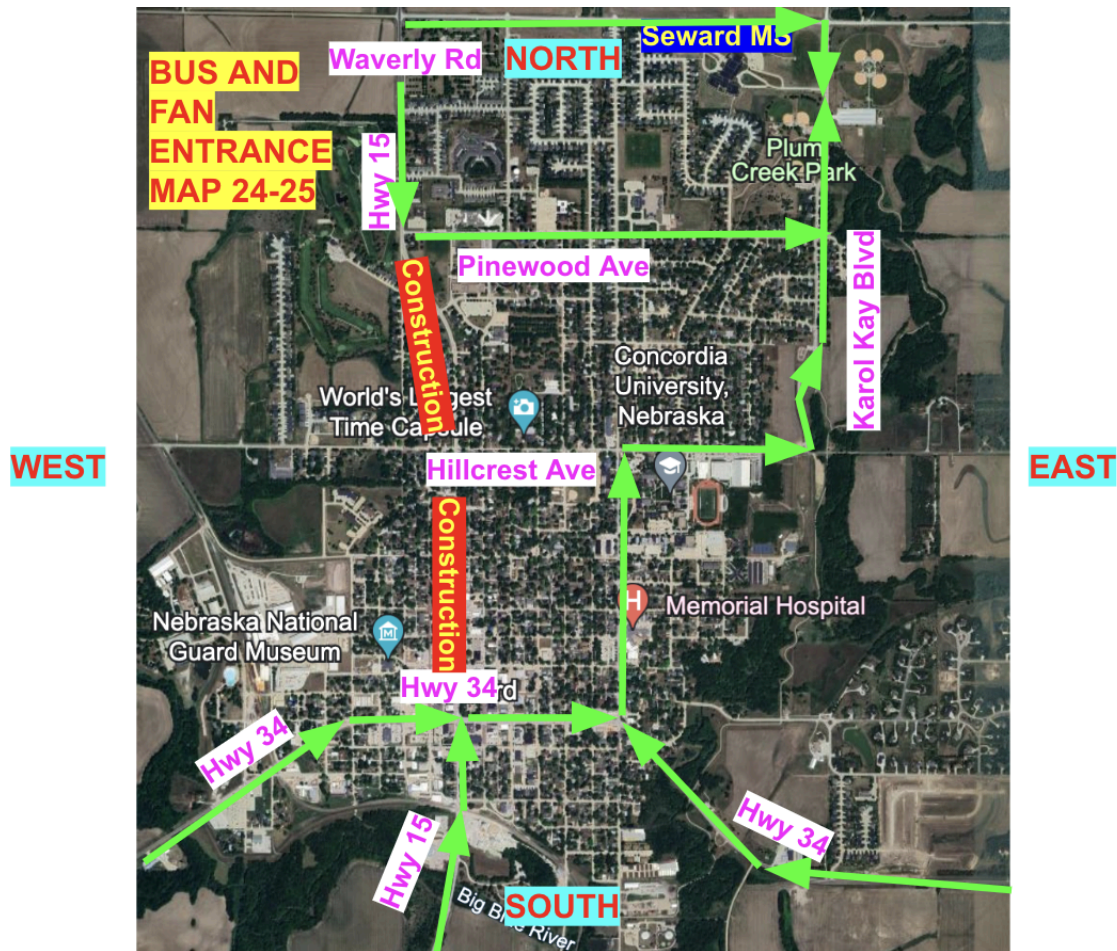
Video Guide: <https://share.vidyard.com/watch/J6e6HEBANRMvCF6Co2nkhv?>

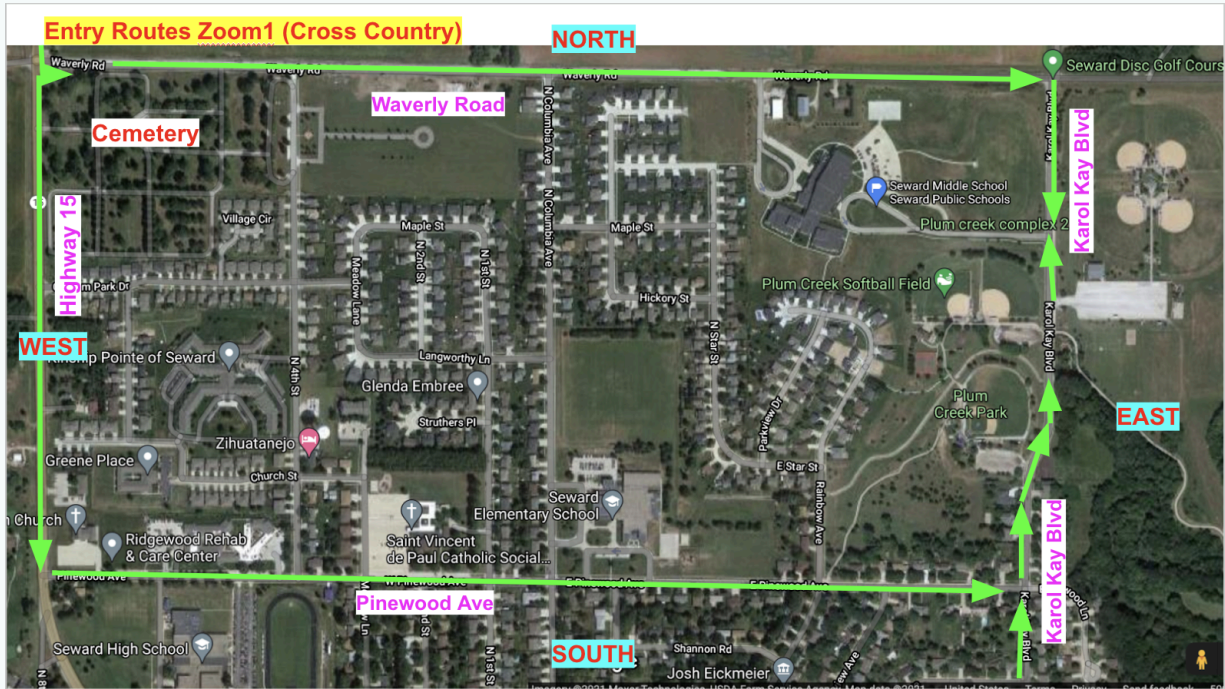
If you have not registered, please contact the Nebraska-area Bound support specialist, Brian Kujath, at brian.kujath@gobound.com to get signed up. You will receive an access email and instructions on setting up your roster and entering your athletes in a meet. There will be no meet website link.

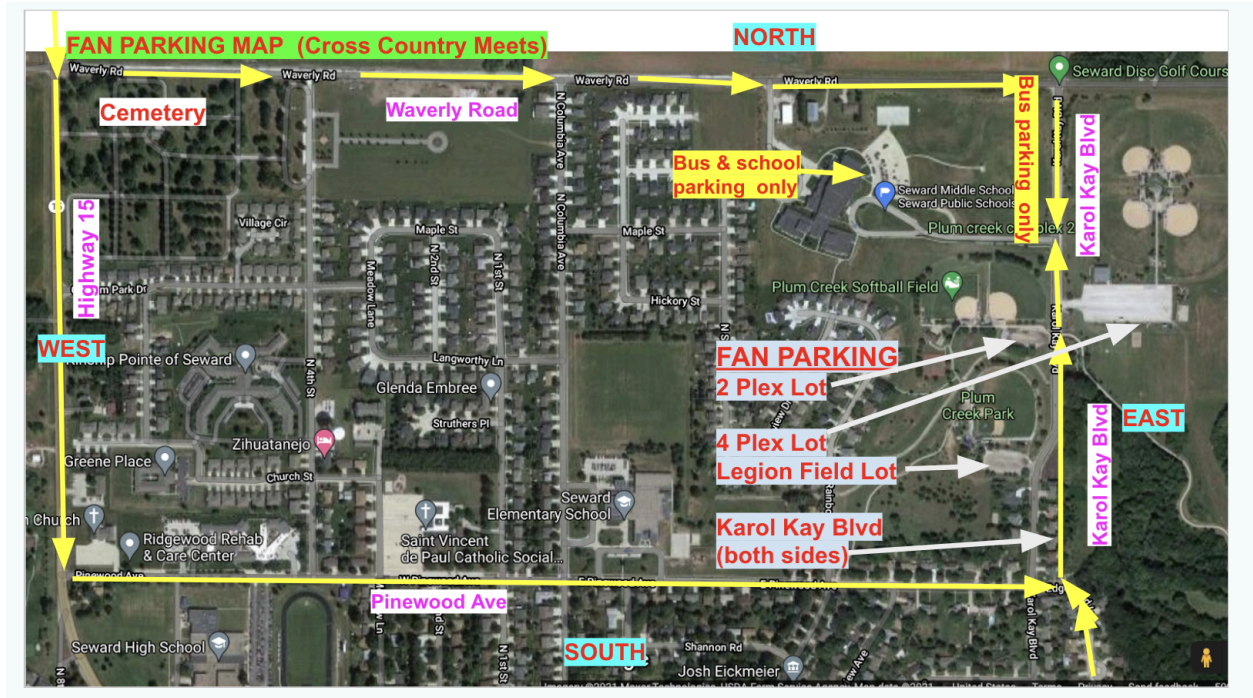
----- Seward Middle School Entrance Maps

1) Coming from the NORTH on Hwy 15,

- a) BUSES: head east on Waverly Road, past the Middle School, to Karol Kay Blvd, then head South on Karol Kay Blvd and then turn right into the SMS entry road from Karol Kay Blvd (east side of SMS)
 - b) FANS: Please go south of the Cemetery and turn left/head east on Pinewood Ave, then to Karol Kay Blvd and head North
- 2) *If coming from the South, West or East of Seward - note the detours (see maps below)*
- a) Take Hwy 34 once inside Seward and then take the 2nd Street Detour to go North until you reach Pinewood Drive, then...
 - b) head east on Pinewood Drive, past the Elem School, to Karol Kay Blvd, then head north on Karol Kay Blvd and then turn left into the SMS entry road from Karol Kay Blvd (east side of SMS)







Running Course for High School



Running Course for Middle School

